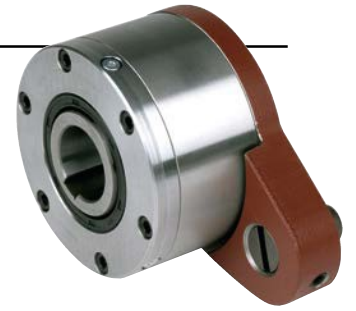


Self-Contained Freewheels

GFR..F2F3 GFR..F3F4



TYPE



GFR..F2F3

GFR..F3F4

Types GFR..F2F3/F3F4 are roller type freewheels, self-contained, sealed and bearing supported, using two 160.. series bearings.

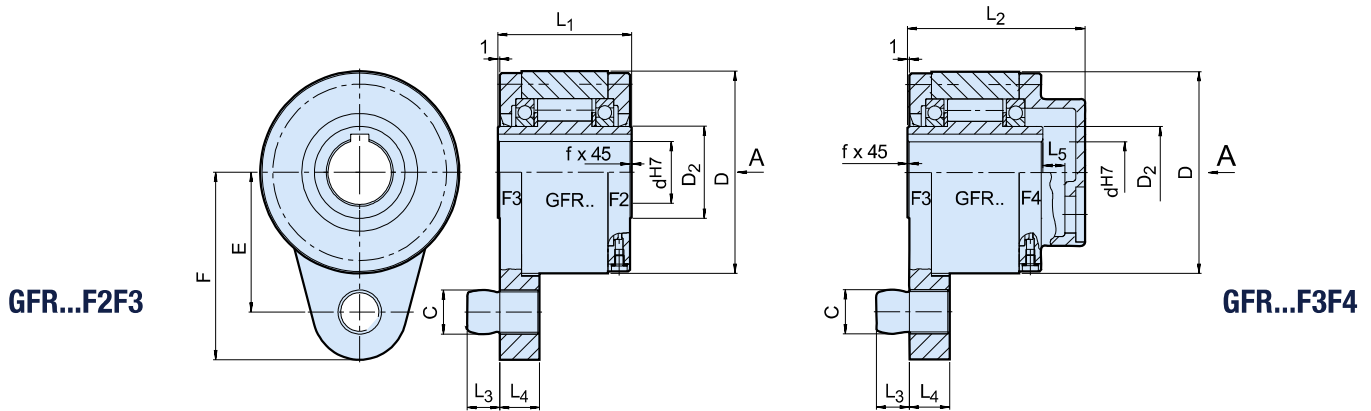
They use the GFR base module. Units must be oil lubricated before use if they are delivered disassembled and in any case for the F3F4 combination. These cover combinations are primarily used as backstops, as shown overleaf. The F3 cover acts as a torque arm and has an integrated stop bolt. The stop bolt should go into a slot in a fixed part of the machine. The stop bolt must have

a radial clearance of 1–3 % of the bolt's diameter. The torque arm and bearings must not be prestressed in any way. F2 and F4 covers are used to close the unit. They are equipped with 3 screws for oil filling, drain and level.

If using cover type F4, shaft end plate and its screw must be sealed to avoid oil leakage through the keyway. Covers are easily fitted, allowing on site selection of rotation direction. If requested units can be delivered assembled and lubricated for the F2F3 combination.

Self-Contained Freewheels

GFR..F2F3, GFR..F3F4



| Type | Size | Overrunning speed | | | | | | | | | | | | | Weight |
|--------------------------|-------|-------------------|-----------------------|---|-----------|------------------------|-----------|------------------------|------------------------|------------------------|------------------------|-----------|-----------|------------------------|--------|
| | | d^{H7} [mm] | $T_{KN}^{1)}$ [Nm] | $n_{imax}^{2)}$ [min ⁻¹] | D [mm] | D ₂ [mm] | C [mm] | L ₁ [mm] | L ₂ [mm] | L ₃ [mm] | L ₄ [mm] | F [mm] | E [mm] | L ₅ [mm] | |
| GFR..F2-F3 GFR..F3-F4 | 12 | 55 | 3100 | 62 | 20 | 10 | 42 | 64 | 10 | 13 | 59 | 44 | 6 | 0,5 | 1,4 |
| | 15 | 125 | 2800 | 68 | 25 | 10 | 52 | 78 | 10 | 13 | 62 | 47 | 10 | 0,8 | 1,8 |
| | 20 | 181 | 2400 | 75 | 30 | 12 | 57 | 82 | 11 | 15 | 72 | 54 | 10 | 0,8 | 2,3 |
| | 25 | 288 | 1600 | 90 | 40 | 16 | 60 | 85 | 14 | 18 | 84 | 62 | 10 | 1,0 | 3,4 |
| | 30 | 500 | 1300 | 100 | 45 | 16 | 68 | 95 | 14 | 18 | 92 | 68 | 10 | 1,0 | 4,5 |
| | 35 | 725 | 1200 | 110 | 50 | 20 | 74 | 102 | 18 | 25 | 102 | 76 | 12 | 1,0 | 5,6 |
| | 40 | 1025 | 850 | 125 | 55 | 20 | 86 | 115 | 18 | 25 | 112 | 85 | 12 | 1,5 | 8,5 |
| | 45 | 1125 | 740 | 130 | 60 | 25 | 86 | 115 | 22 | 25 | 120 | 90 | 12 | 1,5 | 8,9 |
| | 50 | 2125 | 580 | 150 | 70 | 25 | 94 | 123 | 22 | 25 | 135 | 102 | 12 | 1,5 | 12,8 |
| | 55 | 2625 | 550 | 160 | 75 | 32 | 104 | 138 | 25 | 30 | 142 | 108 | 15 | 2,0 | 16,2 |
| | 60 | 3500 | 530 | 170 | 80 | 32 | 114 | 147 | 25 | 30 | 145 | 112 | 15 | 2,0 | 19,3 |
| | 70 | 5750 | 500 | 190 | 90 | 38 | 134 | 168 | 30 | 35 | 175 | 135 | 16 | 2,5 | 23,5 |
| | 80 | 8500 | 480 | 210 | 105 | 38 | 144 | 178 | 30 | 35 | 185 | 145 | 16 | 2,5 | 32 |
| | 90 | 14500 | 420 | 230 | 120 | 50 | 158 | 192 | 40 | 45 | 205 | 155 | 16 | 3,0 | 47,2 |
| | 100 | 20000 | 310 | 270 | 140 | 50 | 182 | 217 | 40 | 45 | 230 | 180 | 16 | 3,0 | 76 |
| | 130 | 31250 | 220 | 310 | 160 | 68 | 212 | 250 | 55 | 60 | 268 | 205 | 18 | 3,0 | 110 |
| 150 | 70000 | 170 | 400 | 200 | 68 | 246 | 286 | 55 | 60 | 325 | 255 | 20 | 4,0 | 214 | |

NOTES

1) $T_{max} = 2 \times T_{KN}$
 » Refer to Selection page 7 to 11

2) Inner race overruns
 Keyway to DIN 6885.1

When ordered assembled, please specify direction of rotation seen from arrow „A“: „R“ Inner race overruns in clockwise direction, „L“ Inner race overruns in counterclockwise direction

» Refer to mounting and maintenance instructions page 12 to 13

MOUNTING EXAMPLE

