

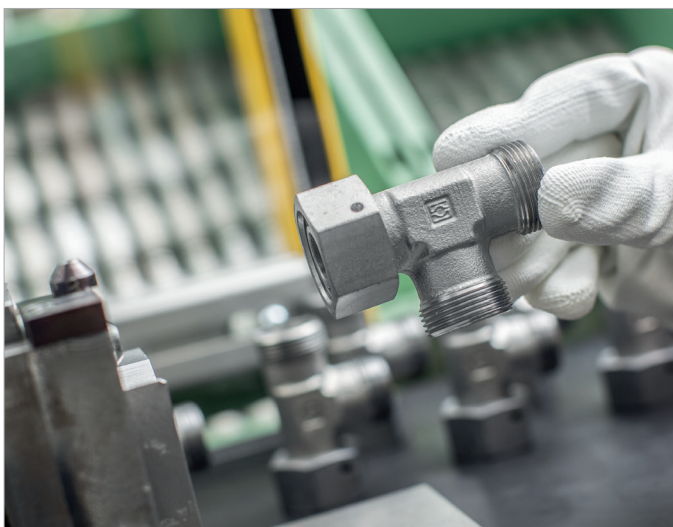
Tube Connectors



Assembly Tools and Devices



Product Overview
STAUFF Connect



STAUFF Connect

The STAUFF Connect product group is closely aligned with the market requirements and contains an extensive range of tube connectors made of carbon steel for metric tubes with outer diameters ranging from 4 to 42 mm in accordance with ISO 8434-1 / DIN 2353:

- 24° cutting ring fittings
- 24° taper fittings with O-ring
- 24° weld cones with O-ring
- 37° flared tube fittings

The product range is completed by check and alternating valves for inline installation, thread reducers as well as blanking plugs and screws.

Special product types and sizes as well as alternative materials, material combinations and surface coatings deviating from the standards can be supplied on request.

Automated assembly machinery and hardened, wear-resistant tools enable the reliable assembly of tube connectors – both for series production in the workshop and on-site.

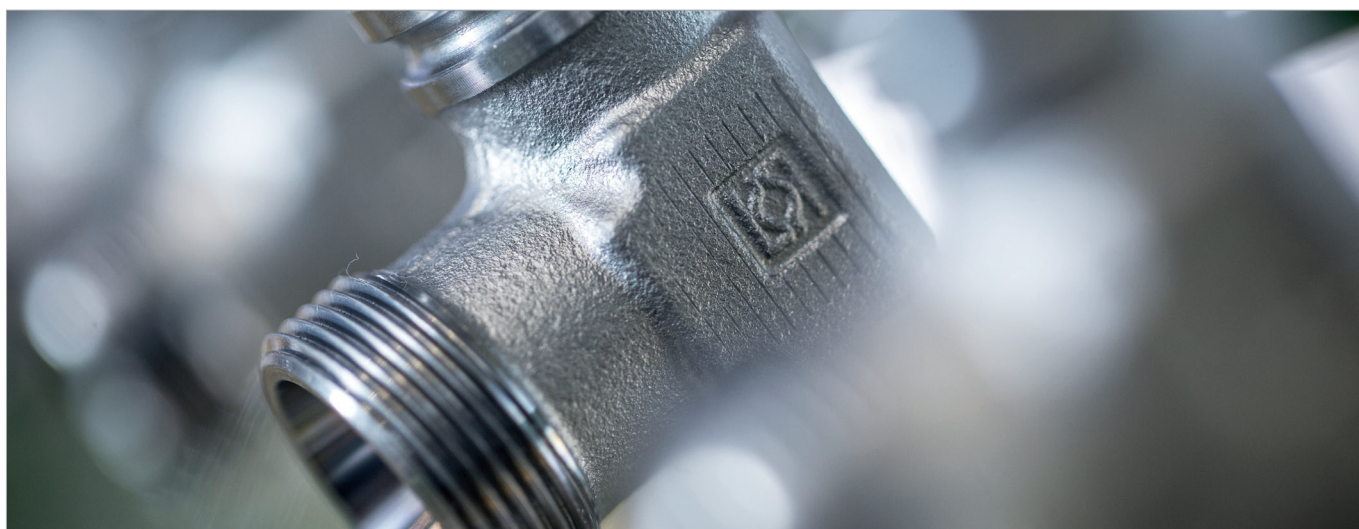
Because of its versatility and flexibility, the patented STAUFF Form tube forming system is undoubtedly the best solution for series production, in particular for applications with highest requirements with regards to safety, reliability and repeatability as well as process stability.

For the finishing of the tube connector range in carbon steel, STAUFF relies on the STAUFF Zinc/Nickel surface coating which has proven successful for many years. It provides reliable surface protection – even after transport, handling and assembly – and meets all current legal requirements.

For selected types and series, independent certificates and approvals can be provided:

- Bureau Veritas
- DNV GL
- Lloyd's Register
- Russian Maritimes Register of Shipping





STAUFF Zinc/Nickel Coating



Layers

- Sealing
- Passivation
- Zinc/Nickel
- Steel

With at least 1200 hours resistance against red rust, the STAUFF Zinc/Nickel surface coating offers excellent surface protection – even after transport, handling and assembly. This was confirmed by testing in the salt-spray chamber according to DIN EN ISO 9227.

Users across all industries and applications benefit from sophisticated technology, which has been developed for and used by the very demanding automotive industry for many years now and that is already the proven standard for a large proportion of STAUFF components since 2007.

- At least 1200 hours resistance to red rust / base metal corrosion under practical conditions in the salt-spray chamber according to DIN EN ISO 9227
- White rust occurs only by way of a slight grey haze
- Surpassing the requirements of the corrosion protection class K5 as defined by the VDMA, the German Engineering Association (360 hours resistance to white rust / 720 hours resistance to red rust)
- Free of hexavalent chrome Cr(VI)
- ELV compliant according to 2000/53/EC (End of Life Vehicles Directive)
- REACH compliant according to 1907/2006/EC (Registration, Evaluation, Authorisation and Restriction of Chemicals)
- RoHS compliant according to 2002/95/EC (Restrictions of the Use of Hazardous Substances)
- Appealing colour scheme with a bright semi-gloss surface finish – comparable to Stainless Steel
- Significantly reduced tendency to corrosion by contact with other metals (such as Aluminium and Stainless Steel)
- Improved abrasion resistance due to the ductility / plastic deformability of the coating
- Little to no risk of triggering allergies – nickel release is down to only a fraction of the statutory limits relating to objects which come into direct and prolonged contact with the skin (independent results of the reference test method according DIN EN 1811 are available on request)
- Good paint adhesion properties
- Resistance against all commonly used hydraulic media





Tube Connectors and Accessories



Cutting Ring
Type **FI-DS**



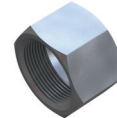
Soft-Sealing Cutting Ring
Type **FI-WDDS**



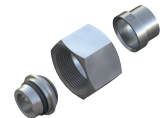
Support Sleeve
Type **FI-VH**



STAUFF Form Adaptor Ring
Type **FI-AR**



Union Nut
Type **FI-M**



37° Flared Tube Fitting Set
Type **FI-AB**



Straight Male Stud Fitting
Type **FI-GE**



Male Stud Elbow
Type **FI-WE**



Male Stud Branch Tee
Type **FI-TE**



Male Stud Barrel Tee
Type **FI-LE**



Straight Union
Type **FI-G**



Straight Reducer
Type **FI-G**



Equal Elbow
Type **FI-W**



Equal Tee
Type **FI-T**



Tee Reducer
Type **FI-T**



Equal Cross
Type **FI-K**



Straight Bulkhead Fitting
Type **FI-GS**



Elbow Bulkhead Fitting
Type **FI-WS**



Straight Bulkhead Weld Fitting
Type **FI-ES**



Straight Weld Fitting
Type **FI-AS**



Elbow Weld Fitting
Type **FI-WAS**



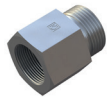
24° Weld Cone with O-Ring
Type **FI-SN**



24° Weld Cone Reducer
with O-Ring
Type **FI-SNR**



Straight Weld Fitting for Tubes
Type **FI-ASV**



Straight Female Stud Fitting
Type **FI-GA**



Gauge Fitting
Type **FI-MA**



Gauge Fitting
with 24° Taper / O-Ring
Type **FI-EMAD**



Gauge Standpipe Fitting
Type **FI-EMA**



Straight Male Stud Fitting
with 24° Taper / O-Ring
Type **FI-EGED**



Straight Fitting
with 24° Taper / O-Ring
Type **FI-SNV**



Straight Reducer with 24° Taper / O-Ring
with 24° Taper / O-Ring
Type **FI-SNV**



Type **FI-REDSO** (for Tube Ends)



Type **FI-EWD** (90°)



Type **FI-EVD** (45°)



Adjustable Branch Tee
with 24° Taper / O-Ring
Type **FI-ETD**



Adjustable Barrel Tee
with 24° Taper / O-Ring
Type **FI-ELD**





Tube Connectors and Accessories



Straight Male Stud
Standpipe Fitting
Type **FI-EGE**



Straight Standpipe Reducer
Type **FI-REDS**



Adjustable Standpipe
Elbow
Type **FI-EW**



Adjustable Standpipe
Branch Tee
Type **FI-ET**



Adjustable Standpipe
Barrel Tee
Type **FI-EL**



Adjustable Male Stud Elbow
(90°) with Lock Nut
Type **FI-WEE**



Adjustable Male Stud Elbow
(45°) with Lock Nut
Type **FI-VEE**



Adjustable Male Stud
Branch Tee with Lock Nut
Type **FI-TEE**



Adjustable Male Stud
Barrel Tee with Lock Nut
Type **FI-LEE**



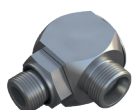
Banjo Elbow
(Medium-Pressure Version)
Type **FI-RSWND**



Banjo Elbow
(High-Pressure Version)
Type **FI-RSW**



Banjo Tee
(High-Pressure Version)
Type **FI-RST**



Swivel Elbow
Type **FI-DGWESV**



Check Valve
Type **FI-RV**



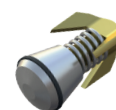
Male Stud Check Valve
Type **FI-RVV**
(Flow from Stud End)



Male Stud Check Valve
Type **FI-RVZ**
(Flow to Stud End)



Female Stud Check Valve
Type **FI-RVI**



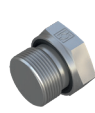
Check Valve Installation Kit
Type **FI-VES**



Alternating Valve
Type **FI-WV**



Thread Reducer
Type **FI-RED**



Blanking Screw for Ports
(Heavy Duty)
Type **FI-VSV**



Blanking Screw for Ports
Type **FI-VS**



Blanking Plug
with 24° Taper / O-Ring
Type **FI-VD**



Blanking Plug
with Sealing Edge
Type **FI-BUZ**



Blanking Plug for Tube Ends
Type **FI-VSK**



Hexagon Lock Nut
Type **FI-SKM**



Profile Sealing Rings
and O-Rings



Spare Parts
and Accessories

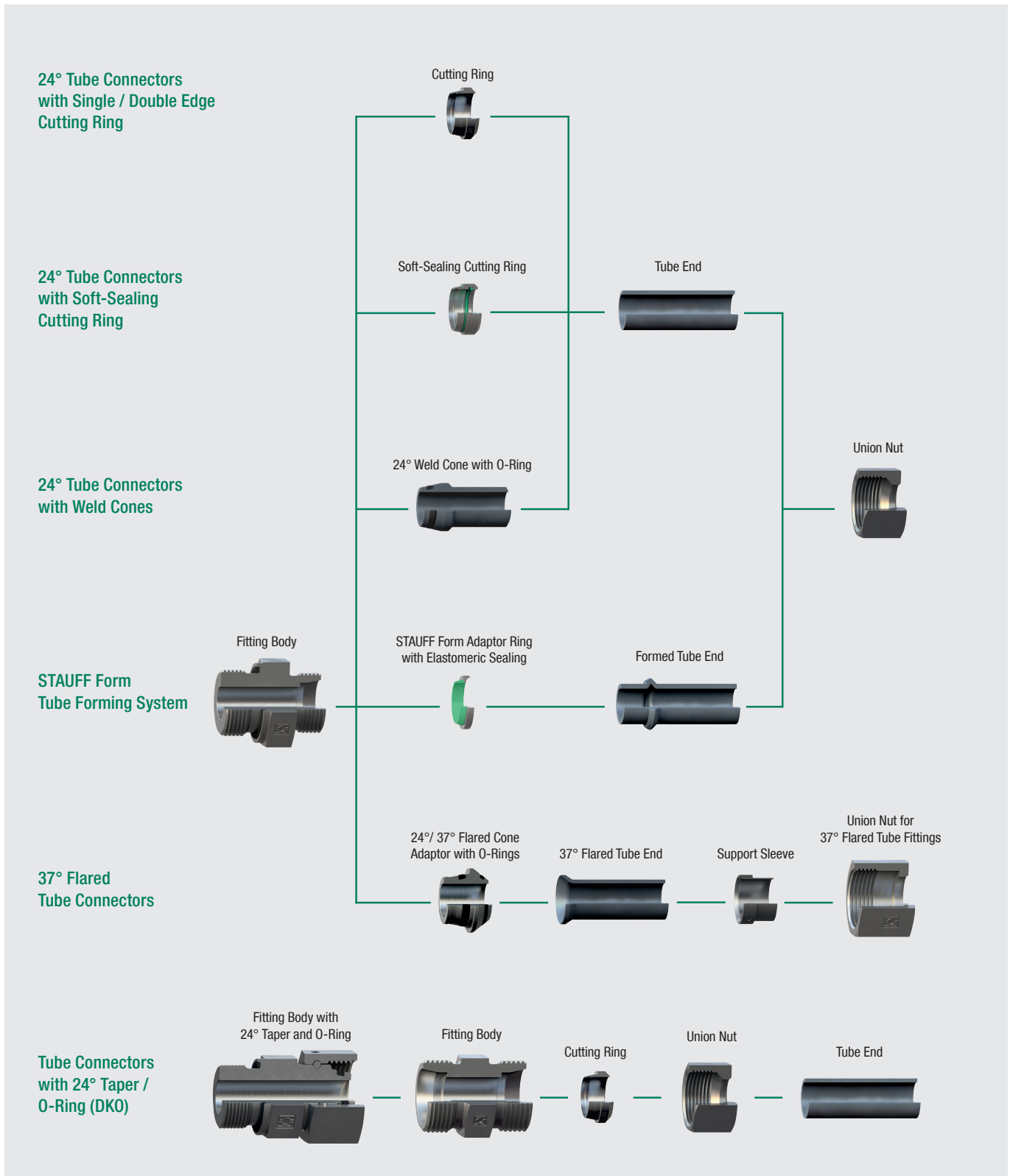


Custom-Designed
Solutions



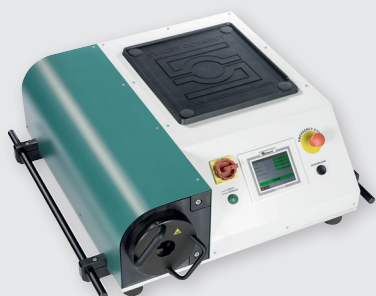


Overview of Tube Connection Systems



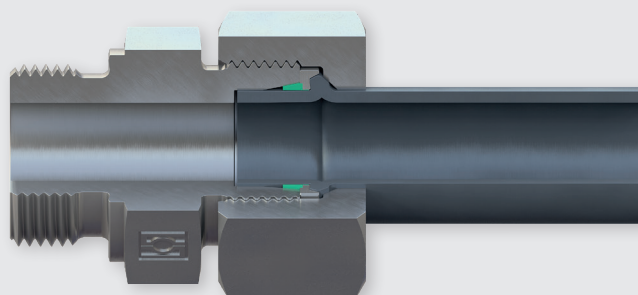


Assembly Tools and Devices

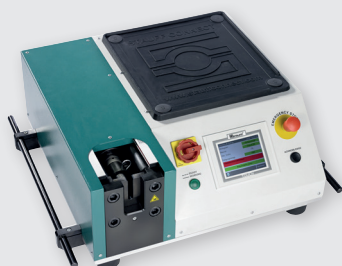


STAUFF Form
Tube Forming Machine

Type SF0-F



STAUFF Form
Tube Forming System



Cutting Ring Pre-Assembly and Final Assembly Machine
with Automatic Pressure Setting

Type SPR-PRC-POC



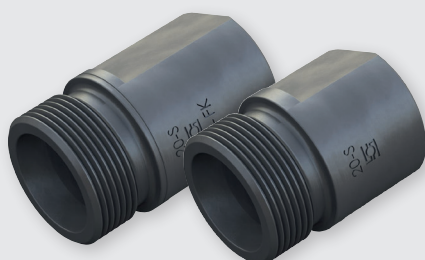
Combined Cutting Ring Pre-Assembly and 37° Flaring Machine
with Automatic / Manual Pressure Setting

Type SPR-PRC-MA



Portable Cutting Ring Assembly Machine
with Manual Pressure Setting

Type SPR-PRC-H-SET



Assembly Stud for the Manual Cutting Ring Assembly

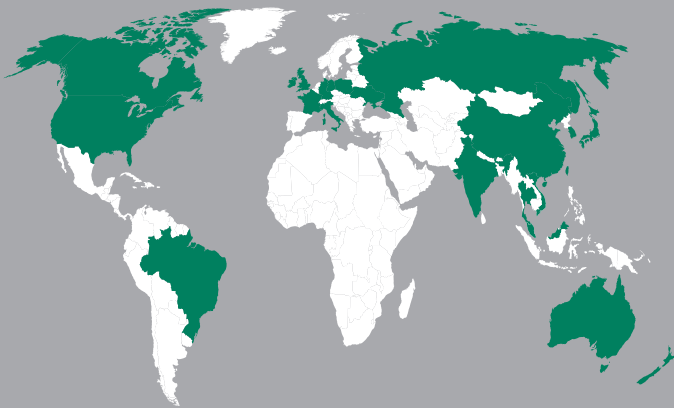
Type FI-FK / FI-VK



Thread Identification Board

Type FI-TIB



**GERMANY**

Walter Stauffenberg GmbH & Co. KG
Im Ehrenfeld 4
58791 Werdohl
Tel.: +49 2392 91 60
Fax: +49 2392 91 61 03
E-Mail: sales@stauff.com

STAUFF products and services are globally available through wholly-owned subsidiaries and a tight network of authorised distributors and representatives in all major industrial regions of the world.

You can find detailed contact information at
www.stauff.com

AUSTRALIA

STAUFF Corporation Pty Ltd
Tel.: +61 2 4271 9000
sales@stauff.com.au

BRAZIL

STAUFF Brasil Ltda.
Tel.: +55 11 47 72 72 00
stauff@stauffbrasil.com

CHINA

STAUFF China
Tel.: +86 21 68 18 70 00
info@stauff.com.cn

FRANCE

STAUFF S.A.S.
Tel.: +33 2 54 50 55 50
direction@stauffsa.com

INDIA

STAUFF India Pvt. Ltd.
Tel.: +91 20 67 31 4900
sales@stauffindia.com

IRELAND

STAUFF Ireland
Tel.: +44 28 92 60 69 00
sales@stauffireland.com

ITALY

STAUFF Italia S.r.l.
Tel.: +39 031 65 84 94
sales@stauff.it

CANADA

STAUFF Canada Ltd.
Tel.: +1 416 282 46 08
sales@stauffcanada.com

KOREA

STAUFF Korea Ltd.
Tel.: +82 51 266 66 66
info@stauff.co.kr

MALAYSIA

STAUFF South East Asia Sdn Bhd
Tel.: +60 3 5637 7888
sales@stauff.com.my

NEW ZEALAND

STAUFF Corporation (NZ) Ltd.
Tel.: +64 9 912 1530
sales@stauff.co.nz

POLAND

STAUFF Polska Sp. z o.o.
Tel.: +48 58 660 11 60
sales@stauff.pl

RUSSIAN FEDERATION

STAUFF LLC
Tel.: +7 495 276 16 50
sales@stauff.ru

THAILAND

STAUFF (Thailand) Co., Ltd.
Tel.: +66 2 721 73 23
sales@stauff.co.th

UNITED STATES

STAUFF Corporation
Tel.: +1 201 444 78 00
sales@stauffusa.com

UNITED KINGDOM

STAUFF UK Ltd.
Tel.: +44 114 251 85 18
sales@stauff.co.uk

VIETNAM

STAUFF Vietnam Ltd.
Tel.: +84 8 3948 1041
sales@stauff.com.vn