

Boost pressure

Increase crane lifting capacity

Why settle for tractor, ship mount and offshore platform system pressures limited to 200-bar supply that limits lifting capacity significantly?

Now you can achieve the max lifting capacity for your crane with the M-HC6D-013 miniBOOSTER intensifier system.

miniBOOSTER boosts the pump pressure to meet the max allowed pressure and force up to 385 bar so you can realise its full potential.

The intensifier system can be mounted before the control valve supplying all the work functions, including lifting, Knee and Telescopic cylinders or after the control valve supplying a single work function.

The miniBOOSTER intensifier system can be delivered with 100, 200 or even 400 l/min by-pass-functions to enable full crane movement at Load (pressures) up to pump pressure. The booster will automatically activate to build high pressure.

Flow will be reduced accordingly. There's no need to worry. After all, cranes seldom move fast or abruptly when they are fully loaded or when the boom is fully extended.

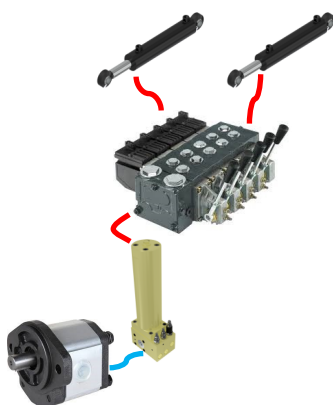
You can order the intensifier system in either tube or flange mount versions for direct attachment to the cylinder.

See our video on:

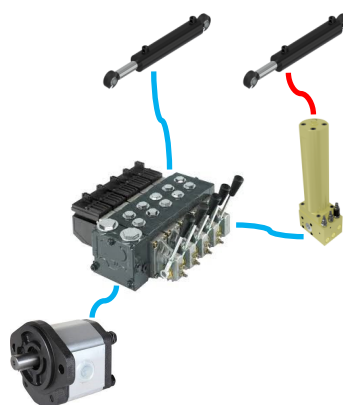
www.minibooster.com/videos/ - Agriculture - Mobile application



Mounted before the control valve



Mounted after the control valve



Mounted direct on the cylinder



— Pump pressure flow
— High pressure flow